



MONTHLY MEMBERSHIP PROGRESS REPORT

District 2 E1

Results as of: 6/30/2015

GMT: HAL GRIFFIN

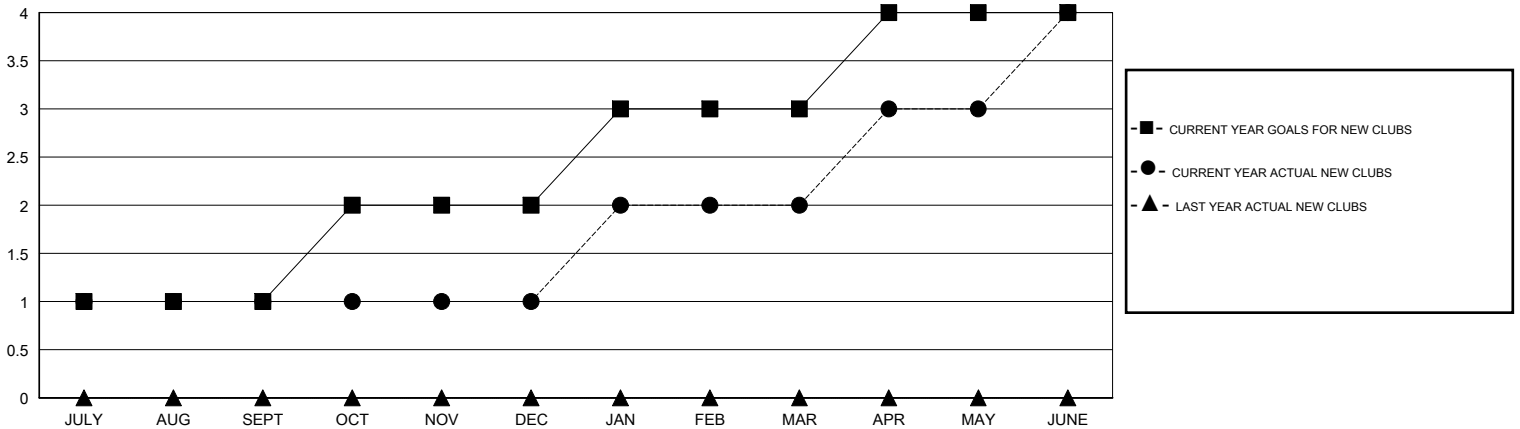
LOCATION TEXAS

GMT CA 1

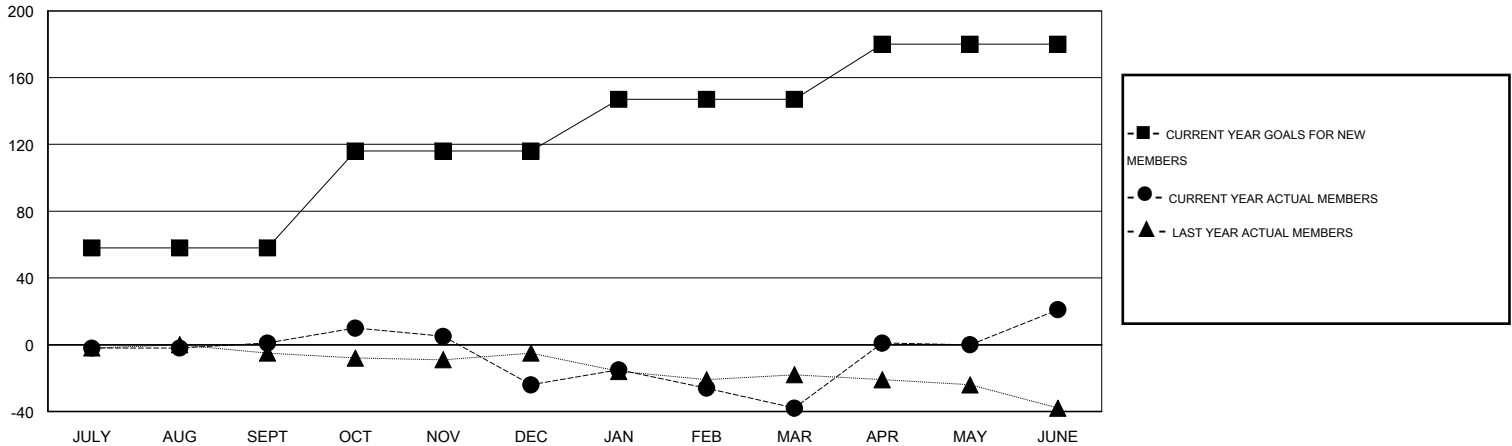
Clubs				
RESULTS FOR 2014-2015				
QUARTER	NEW CLUB GOAL	NEW CLUBS	DROPPED CLUBS	NET GAIN/LOSS
JULY/AUG/SEPT	1	1	2	-1
OCT/NOV/DEC	1	0	1	-1
JAN/FEB/MAR	1	1	0	1
APR/MAY/JUNE	1	2	1	1

Members				
RESULTS FOR 2014-2015				
QUARTER	NEW MEMBER GOAL	CHARTER AND NEW MEMBERS ADDED	DROPPED MEMBERS	NET GAIN/LOSS
JULY/AUG/SEPT	58	46	45	1
OCT/NOV/DEC	58	43	68	-25
JAN/FEB/MAR	31	59	73	-14
APR/MAY/JUNE	33	96	37	59

GOALS AND ACTUAL NEW CLUBS CUMULATIVE



GOALS AND ACTUAL MEMBERS CUMULATIVE



DROPPED CLUBS: 4

37 CLUBS OF 59 ADDED 1 OR MORE NEW MEMBERS

GENDER DISTRIBUTION	
MALE	976 (73.00%)
FEMALE	361 (27.00%)

DROPPED MEMBERS	
DECEASED	21
CLUB CANCELLED	44
OTHER	158
TOTAL	223

[CLICK HERE FOR HEALTH ASSESSMENT DATA](#)

FAMILY UNIT MEMBERS	128
HEAD OF HOUSEHOLD	63
NON-HEAD OF HOUSEHOLD	65